

# C0604

## Men's Short Sleeve Oxford Shirt

### Weight

4.6 oz/yd2

### Knitted Fabric

Oxford

### Blend

75% Cotton · 25% Polyester

### Sizes

S, M, L, XL, 2XL



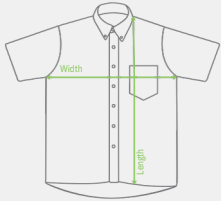
White

Light Blue

Office



## Measurements



	Inches		Centimeters	
	Width	Length	Width	Length
S	21 1/2"	30"	54.6	76.2
M	22 1/2"	31"	57.2	78.7
L	23 1/2"	32 1/2"	59.7	82.6
XL	25"	33 1/2"	63.5	85.1
2XL	26"	34 1/2"	66.0	87.6
Tolerance	+/- 1/2"	+/- 1/2"	+/- 1.3	+/- 1.3